



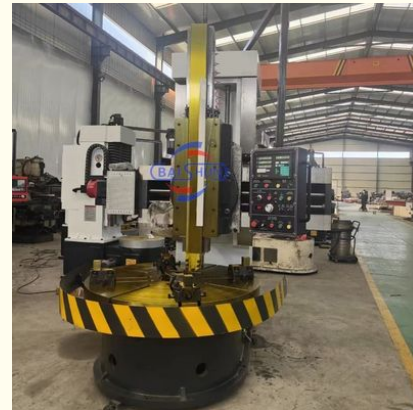
Small VTL Lathe Vertical Machine Manual Type Vertical Turning Lathe Machine C5112

Our Product Introduction

for more products please visit us on lathemach.com

Basic Information

- Place of Origin: China
- Brand Name: BAISHUN
- Certification: ISO
- Model Number: C5112
- Minimum Order Quantity: 1 Set
- Price: Negotiation
- Packaging Details: Export standard wooden case package
- Delivery Time: 35 working days
- Payment Terms: T/T, L/C, Western Union
- Supply Ability: 50 Sets per Month



Product Specification

- Name: VTL Vertical Lathe Machine
- Machining Capacity: Medium Duty
- Max. Turned Length (mm): 1200 Mm
- Type: Vertical Type
- Spindle Motor Power(kW): 22
- Voltage: 380V
- Dimension(L*W*H): 2360*2280 *2800mm
- Weight (KG): 8000 KG
- Warranty: 1 Year
- Automatic: Manual Type
- Highlight: lathe vertical, small vertical lathe, C5112



More Images



Product Description

Cheap Manual Type C5112 VTL Lathe Supplier Vertical Lathe Machine

Description:

The Manual type vertical lathe, also known as a vertical turning center, is a machine tool used for turning and cutting metal components with high precision and efficiency.

Compare with conventional lathes, which are typically horizontal and require the workpiece to be mounted on a rotating chuck, a vertical lathe has a vertical spindle that holds and rotates the workpiece. The cutting tool is mounted on a tool turret that moves in multiple axes, allowing for precise and complex machining operations.

The vertical lathes are widely used in the manufacturing industry for producing large and heavy components, such as gears, turbines, and aerospace parts. They are particularly useful for turning components with a high aspect ratio because the vertical orientation minimizes the effects of gravity on the workpiece, reducing the risk of deflection and distortion.

Additionally, vertical lathes are highly automated and can be programmed to perform a wide range of machining operations, such as turning, drilling, boring, threading, and milling, with minimal human intervention.

Overall, The Manual type vertical lathes are a versatile and efficient machining tool that offer high precision and automation capabilities, making them an essential component of modern manufacturing processes.

Advantage:

1. With CE, ISO certification.
2. Full production tracking.
3. Professional engineers can guarantee the highest quality.
4. More suppliers as alternatives, guarantee your lowest and competitive price.
5. Export experience with more than 15 years experience, will answer your pre-sales and after-sales questions.
6. OEM production is available, to meet customer needs
7. Low MOQ (1 unit) is available.
8. 24 hours technical support.

Specification:

| Model | C518 | C5112 | C5116 | C5120 | C5125 |
|---|--------------------|--------------------|--------------------|--------------------|--------------------|
| Max.turning dia.(mm) | 800 | 1200 | 1600 | 2000 | 2500 |
| Max.cutting height(mm) | 800 | 1000 | 1000 | 1250 | 1250 |
| Max.loading weight(tons) | 1.2 | 3.2 | 5 | 8 | 10 |
| Worktable diameter(mm) | 720 | 1000 | 1400 | 1800 | 2250 |
| Worktable speed range(r/min) | 30-260 | 6.3-200 | 5-160 | 3.2-100 | 2-63 |
| Max worktable torque(n.m) | 1000 | 25000 | 32000 | 32000 | 35000 |
| vertical travel of vertical tool post(mm) | 650 | 650 | 800 | 800 | 1200 |
| horizontal travel of vertical post(mm) | 570 | 700 | 915 | 1200 | 1400 |
| G.W(tons) | 7 | 8 | 12.4 | 17 | 23 |
| Dimension(L*W*Hmm) | 2080*2621 *3515 | 2360*2280 *2800 | 2830*2670 *3010 | 3200*2800 *3250 | 3300*4000 *3500 |

machine picture



Henan Baishun Machinery Equipment Co., Ltd.



+8618939515188



sale@goodlathe.com



lathemach.com

No.65, Tianming Road, Jinshui District, Zhengzhou City, Henan Province, China