



## Cnc Vtl Lathe Tool Mini Tour A Metal With Driven Tools High Speed Machining

Our Product Introduction

for more products please visit us on lathemach.com

### Basic Information

- Place of Origin: Henan, China
- Brand Name: Baishun
- Certification: CE ISO
- Model Number: CK5112
- Minimum Order Quantity: 1 Set
- Price: Negotiable
- Packaging Details: Export standard wooden case package or Negotiation with customers
- Delivery Time: 30-35 work days
- Payment Terms: L/C, T/T, Western Union
- Supply Ability: 100 Set/Sets per Month

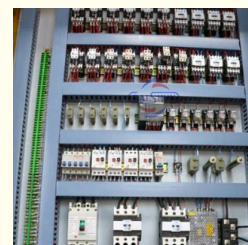


### Product Specification

- Max. Spindle Speed (r.p.m): 200 R.p.m
- No. Of Spindles: Single
- Max. Turned Length (mm): 1200
- Travel (X Axis)(mm): 700 Mm
- Travel (Z Axis)(mm): 650 Mm
- Positioning Accuracy (mm):  $\pm 0.005$
- Repeatability (X/Y/Z) (mm):  $\pm 0.005$
- Dimension(L\*W\*H): 2350\*2350\*2700mm
- Weight (KG): 8500
- Product Name: High Speed Henan Cnc Machine Mini Tour A Metal Lathe Machine
- Highlight: vtl lathe, vtl machining, vtl cnc lathe



### More Images



Our Product

### Product Description

#### Product Description

Hot Sale Lathe Machine Cnc Machining Parts Cnc Wheel Lathe

Hot Sale Lathe Machine Cnc Machining Parts Cnc Wheel Lathe is suitable to process ferrous metal, nonferrous metals and

partial non-metallic material, and could achieve the processing of turning of the end face, inside and outside cylindrical surface, inside and outside circular conical surface and drilling, expanding, reaming of hole. Main transmission is driven by the spindle AC servo motor, hydraulic gear change and two gears step less speed regulation. Worktable is manual 4-jaw single movement chuck.

CNC Vertical lathe is a kind of large mechanical equipment, which is used to process large and heavy work pieces with large radial size and relatively small axial size and complex shape. Such as a cylindrical surface, an end surface, a conical surface, a cylindrical hole, a conical hole and the like of various discs, wheels and sleeve work pieces, and can also be processed by means of additional devices such as running threads, spherical surface turning, imitating machining, grinding and the like; compared with a horizontal lathe, the work pieces are clamped in the clamping decoration of the horizontal lathe, while the main shaft axis of a vertical lathe is in a vertical layout, and the table surface of a worktable is in a horizontal plane; Therefore, the clamping and alignment of the work piece are more convenient. This arrangement reduces the load on the spindle and bearings, so the vertical lathe can maintain its working accuracy for a long time.

Moreover, the CNC vertical lathe is equipped with advanced automation features, allowing for minimal human intervention. It can be programmed to perform a wide range of machining operations, including turning, drilling, boring, threading, and milling. Offering versatility, high precision, and automation, the CNC vertical lathe has become an indispensable tool in modern manufacturing processes.

The CNC vertical lathe is a top-performing machine with a wide range of capabilities and high productivity. Our company has developed a cutting-edge machine tool that seamlessly integrates animatronics and hydraulics, drawing inspiration from advanced design and manufacturing techniques, and incorporating our rich corporate culture. This allows us to deliver world-class products to both domestic and international customers.

To ensure high precision and durability, we have employed integral casting and a thermally balanced structure for the table. The main shaft bearing utilizes a high-precision double row cylindrical roller bearing, and the table guideway is optimized for smooth operation.

Please note that we are constantly striving to enhance our products, and therefore, the information provided may be subject to change without prior notice.

#### Machine parameter

Model	CK518	CK5112 Q	CK5112 A	CK5116 Q	CK5120A	CK5126A
Max. turning diameter of vertical tool rest (mm)	800	1200	1200	1600	2000	2600
Working table diameter (mm)	700	1000	1000	1400	1800	2200
Max. height of work-piece (mm)	800	1000	1000	1200	1250	1400
Max. weight of work-piece (kg)	1500	1500	3200	3200	8000	8000
Range of worktable rotation speed (rpm)	30-260	20-180	6.3-200	15-160	3.2-100	2.2-70
Feeding series	Stepless	Stepless	Stepless	Stepless	Stepless	Stepless
Range of tool rest feed (mm/min)	0.25-90	0.25-90	0.8-86	0.25-90	0.8-86	0.8-86
Cross beam travel (mm)	500	1000	650	1200	890	1090
Horizontal travel of tool rest (mm)	500	700	700	900	1115	1400
Vertical travel of tool rest (mm)	450	500	650	750	800	800
Size of section of cutter bar (mm)	30*40	30*40	30*40	30*40	30*40	30*40
Main motor power (kw)	11	15	22	15	30	30

# HIGH EFFICIENCY CK5112 CNC VERTICAL LATHE



IT'S TIME TO  
GET YOUR MACHINE

MULTI-PURPOSE | CNC LATHE

High Quality /PRODUCT

Factory Direct /SELLING

Whatsapp: +86 18003851898  
Email: dora@bsmachinery.com



## Product Details Display

01

### WORKTABLE

Worktable has high rotation precision and large load capacity.



WhatsApp: +86 18003851898

03

### COLUMN/ CROSS BEAM

High frequency column and beamguide, hardness HRC 55 degree.



WhatsApp: +86 18003851898

02

### ELECTRIC TOOL POST

Clients can choose 4,5,6 station electric tool post.



04

### CONTROL SYSTEM

Standard with GSK980TDi control  
Optional: Siemens, Fanuc, Syntec ect.

## Product Description

### Hot Sale Lathe Machine Cnc Machining Parts Cnc Wheel Lathe

Hot Sale Lathe Machine Cnc Machining Parts Cnc Wheel Lathe is suitable to process ferrous metal, nonferrous metals and partial non-metallic material, and could achieve the processing of turning of the end face, inside and outside cylindrical surface, inside and outside circular conical surface and drilling, expanding, reaming of hole. Main transmission is driven by the spindle AC servo motor, hydraulic gear change and two gears step less speed regulation. Worktable is manual 4-jaw single movement chuck.

Product Overview: The Vertical CNC Lathe, also known as a Vertical Turning Center, is a powerful machine used in metalworking to precisely and efficiently turn and cut metal components. With its vertical spindle that holds and rotates the workpiece, it has gained popularity in various manufacturing industries. It excels in the production of large and heavy components like gears, turbines, and aerospace parts, especially those with a high aspect ratio.

Moreover, the CNC vertical lathe is equipped with advanced automation features, allowing for minimal human intervention. It can be programmed to perform a wide range of machining operations, including turning, drilling, boring, threading, and milling. Offering versatility, high precision, and automation, the CNC vertical lathe has become an indispensable tool in modern manufacturing processes.

The CNC Vertical lathe is a big machine used for handling large and heavy workpieces with a wide radial size and relatively smaller axial size. It's designed to process workpieces with complex shapes, such as cylindrical surfaces, end surfaces, conical surfaces, cylindrical holes, conical holes, and more. Additionally, with the help of additional tools, it can also perform operations like thread cutting, turning spherical surfaces, imitation machining, and grinding. Unlike horizontal lathes where workpieces are clamped horizontally, the vertical lathe has its main spindle axis arranged vertically, and the worktable is positioned horizontally. This arrangement makes it more convenient for clamping and aligning workpieces. Furthermore, this setup reduces the load on the spindle and bearings, enabling the vertical lathe to maintain its accuracy over long periods of operation.

#### Machine parameter

Model	CK518	CK5112Q	CK5112A	CK5116Q	CK5120A	CK5126A
Max. turning diameter of vertical tool rest (mm)	800	1200	1200	1600	2000	2600
Working table diameter (mm)	700	1000	1000	1400	1800	2200
Max. height of work-piece (mm)	800	1000	1000	1200	1250	1400
Max. weight of work-piece (kg)	1500	1500	3200	3200	8000	8000
Range of worktable rotation speed (rpm)	30-260	20-180	6.3-200	15-160	3.2-100	2.2-70
Feeding series	Stepless	Stepless	Stepless	Stepless	Stepless	Stepless
Range of tool rest feed (mm/min)	0.25-90	0.25-90	0.8-86	0.25-90	0.8-86	0.8-86
Cross beam travel (mm)	500	1000	650	1200	890	1090
Horizontal travel of tool rest (mm)	500	700	700	900	1115	1400
Vertical travel of tool rest (mm)	450	500	650	750	800	800
Size of section of cutter bar (mm)	30*40	30*40	30*40	30*40	30*40	30*40
Main motor power (kw)	11	15	22	15	30	30



# HIGH EFFICIENCY CK5112 CNC VERTICAL LATHE



IT'S TIME TO  
GET YOUR MACHINE

MULTI-PURPOSE | CNC LATHE

High Quality /PRODUCT

Factory Direct /SELLING

Whatsapp: +86 18003851898  
Email: dora@bsmachinery.com



## Product Details Display

01

### WORKTABLE

Worktable has high rotation precision and large load capacity.



WhatsApp: +86 18003851898

03

### COLUMN/ CROSS BEAM

High frequency column and beamguide, hardness HRC-55 degree.



WhatsApp: +86 18003851898

02

### ELECTRIC TOOL POST

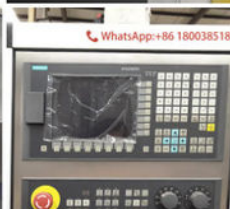
Clients can choose 4,5,6 station electric tool post.



04

### CONTROL SYSTEM

Standard with GSK980TDi control  
Optional: Siemens, Fanuc, Syntec ect.



Henan Baishun Machinery Equipment Co., Ltd.

+8618939515188

sale@goodlathe.com

lathemach.com

No.65, Tianming Road, Jinshui District, Zhengzhou City, Henan Province, China