



## Horizontal Slant Bed Lathe Heavy Duty TCK550 OEM

Our Product Introduction

for more products please visit us on [lathemach.com](http://lathemach.com)

### Basic Information

- Place of Origin: CHINA
- Brand Name: BAISHUN
- Certification: ISO
- Model Number: TCK550
- Minimum Order Quantity: 1 Set
- Price: Negotiable
- Packaging Details: Export standard wooden case package
- Delivery Time: 30-35 work days
- Payment Terms: L/C, T/T, Western Union
- Supply Ability: 50 Set per Month



### Product Specification

- Max. Spindle Speed: OEM Slant Bed CNC Lathe Machine Price
- Max. Rotating Diameter Over Bed: 540mm
- Max. Turning Diameter Over Slide: 270mm
- Max. Processing Length: 700mm
- Positioning Accuracy:  $\pm 0.016\text{mm}$
- X Travel: 220mm
- Z Travle: 750mm
- Applicable Industries: Metal Working Plant
- Tailstock: Manually
- Power: 7.5kw
- Machine Weight: 3800kg
- Color: White And Gray
- Highlight: horizontal slant bed lathe,  
Slant Bed Lathe Heavy Duty, slant bed lathe



### More Images



## Product Description

### Horizontal Metal Lathe Heavy Duty OEM Slant Bed CNC Lathe Machine Price

#### Description

This machine tool has a maximum diameter of  $\phi 360\text{mm}$  and a maximum length of 500mm for machining. We have upgraded the TCK50 series machines with a newly designed mainframe structure and a reliable assembly process. With its stable performance and innovative ergonomic design, the TCK series will undoubtedly become an industry leader. This lathe can handle shafts, discs, threads, arcs, cones, and both inner and outer surfaces of rotating objects. We have carefully matched the rigidity of the main spindle, bed, and tailstock to greatly improve the overall stability during heavy cutting. As a result, the machining accuracy of the outer circular surface can reach IT6 to IT7 level. This versatile machine tool is especially suitable for efficient, large-scale, and high-precision machining of rotating parts in industries such as automotive, electrical, bearing, and hydraulic.

1.1 This series of machine tools is the company's main export mature products, the machine structure is compact, beautiful and pleasant appearance, spindle torque, high rigidity, stable and reliable performance, with excellent accuracy retention.

1.2 Using 30° or 45° overall inclined bed structure, equipped with high precision preload Taiwan linear roller guide, the machine has high position accuracy, smooth chip removal, suitable for high-speed and high precision machining.

1.3 It is made of high precision spindle unit and spindle box.

Spindle Description:

High precision spindle bearing set and precision assembly and dynamic balance test of the spindle, to ensure high precision, low noise, strong rigidity.

#### Product Parameters

MAIN TECHNICAL DATA		Unit	TCK550	TCK40-750	TCK40-1000
The scope of work	Maximum rotating diameter on the bed	mm	$\phi 540$	$\phi 540$	$\phi 540$
	Maximum turning diameter on the slide	mm	$\phi 270$	$\phi 270$	$\phi 270$
	Maximum processing diameter	mm	$\phi 400$	$\phi 400$	$\phi 400$
	Maximum processing length	mm	700	700	900
Spindle	Maximum spindle speed	r/min	4000	4000	4000
	Spindle runout	mm	0.008/300	0.008/300	0.008/300
	Spindle through hole diameter	mm	$\phi 65$	$\phi 65$	$\phi 65$
	Bar capacity	mm	$\phi 48$	$\phi 48$	$\phi 48$
	Hydraulic chuck	inch	8	8	8
	Spindle motor power	kw	7.5	7.5	7.5
stroke	X-axis travel	mm	220	220	220
	Z-axis travel	mm	750	750	1000
Feed	X axis fast moving	m/min	20	20	20
	Z axis fast moving	m/min	20	20	20
	Cutting feed	mm/min	1-6000	1-6000	1-6000
Tail stock	Tail stock stroke	mm	550/manual	550/manual	800/manual
	Tail stock sleeve stroke	mm	120/ hydraulic/manual		
Guide	Bed rail tilt angle	Deg.	30	30	30
	Type		Liner guideway	Liner guideway	Liner guideway
Precision	positioning accuracy	mm	0.016	0.016	0.016
	Repeatability	mm	0.008	0.008	0.008
Other	Machine weight	kg	3800	3800	4200
	Dimensions	mm	2920x1680x2070	2920x1680x2070	3200x1680x2070

Machine pictures:





## CNC SYSTEM

---



## Main Configuration

---





8-station servo hydraulic tool



A2-5 5000 rpm spindle



KND Control system



Hydraulic chuck



Ball screw and line track



A convex and a flat tailstock design

### Assembly Process and Quality Control



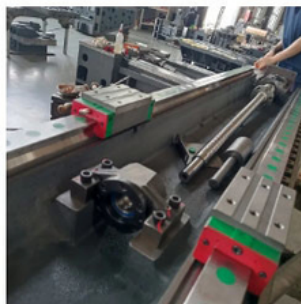
Each contact surface of the workpiece is manually scraped to ensure the precision of the machine.



Line guide rail installation, using code meter accuracy test.



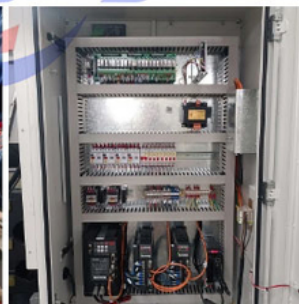
Installation details of inclined track



Screw installation process



Screw installation process



Electrical system configuration box



**Henan Baishun Machinery Equipment Co., Ltd.**



+8618939515188



sale@goodlathe.com



lathemach.com

No.65, Tianming Road, Jinshui District, Zhengzhou City, Henan Province, China