

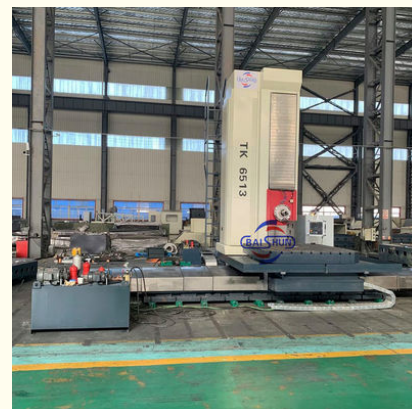


## 130mm Floor Type Cnc Horizontal Boring Milling Machine High Rigidity

### Our Product Introduction

#### Basic Information

- Place of Origin: China
- Brand Name: BAISHUN MACHINERY
- Certification: ISO
- Model Number: TK6513
- Minimum Order Quantity: 1 set
- Price: USD105000/Set
- Packaging Details: 1. Outside we will pack the product with plastic to prevent wet. 2. Outside of the machine will be packed by strong wooden pallet. 3. If there requirement of the package, we can customized based on the detail requirement.
- Delivery Time: 3 month
- Payment Terms: L/C, T/T, Western Union
- Supply Ability: 30 Set/Sets per Month



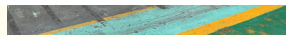
#### Product Specification

- Product Name: Cnc Horizontal Boring Milling Machine
- Type: TK6513
- Spindle Bore: 130mm
- Table Size: 1600\*1800mm
- Max.travel Speed Of Table: 6000mm/min
- Function: Boring And Milling
- Application: Metal Machining
- Color: White And Blue
- CNC Controller: Siemens
- Packing: Export Standard
- Highlight: Cnc Horizontal Boring Milling Machine, 130mm Horizontal Boring Milling Machine, High Rigidity Horizontal Boring Milling Machine



#### More Images





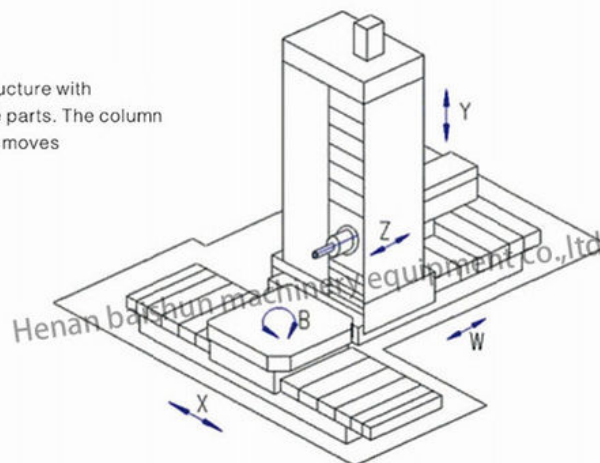
## Product Description

### High Rigidity Cnc Metal Milling 130mm Floor Type Cnc Horizontal Boring Milling Machine CNC planer type boring and milling

The CNC planer type boring and milling lathe are machines with large torque, high efficiency, high rigidity and advanced technologies. Per user's requests, the machines can match with different controllers, different precision requirements, different sizes of tables to form different models of boring machines. This series of boring mills are suitable for machining large, medium sized box shape, frame structure or mould parts, and can perform milling, boring, drilling, winching, tapping etc after one clamping. The machines controls 7 axes with 4 axes simultaneous and allows circular interpolation and 3-D curved surface machining. Equipped with milling head, face plates and other devices, the series of machines have enlarged machining capabilities. The spindle has cooling case to limit the heat in spindle.



The machine is of a T shape structure with horizontal and vertical machine parts. The column moves vertically and worktable moves horizontally.









#### Technical Specification

Item	Unit	TK6511	TK6513	TK6516
Spindle diameter	mm	110	130	160
Spindle taper		ISO 50	ISO 50	ISO 50
Max. spindle speed	rpm	10-2000	2-2000	2-1500
Motor power-Servo	KW	17/22.5	22/30	30/40
Table loading capacity	Kg	6000	10000	20000
Table size	mm	1200*1400 1400*1600	1400*1600 1600*1800	1400*1600 1600*1800 1800*2000
Cross travel of table -X axis	mm	2000(op: 3m, 4m)	2000(op: 4m, 5m)	2500(op: 4m,5m)
Vertical travel of spindle head stock-Y axis	mm	1500(op: 2m, 3m)	2000(op: 3m, 4m)	2000(op: 3m, 4m)
Longitude travel of spindle-Z axis	mm	600	800	1000
Travel of column-V axis	mm	1200	1600	1600
Table rotary indexing-B axis	°	360	360	360
Travel speed of table X	mm/min	5000	0.5-6000	0.5-6000
Tool magazine	pcs	40/60	40/60	40/60

#### Machine bed:

The machine bed is built of resin.wood former with reasonable structure and rigidity. It guarantees a sound base and the steadiness of the machine and the stability of column in motion on the bed.there are top quality imported ground hard dent surface racks on the bed, two preload gears co-drive ensures the accuracy of X axis.

#### Sliding carriage

Built with top quality castings. Resin and wood former, the sliding carriage possesses sufficient intensity. It connects to the machine bed with two wide guide ways. The single guide way serves as main positioning with support from double guide ways to maintain the stability and linearity of column in motion on machine bed.

#### Column

It is made of high quality casting resin and wood former in a double frame structure, the column is of sufficient rigidity that allows the smooth movement of spindle box vertically. Mosaic type counter weight balance rails are built inside the column to ensure the stability of the counterweight's vertical movements, thus to ensure the high precision of the machine. The two ground rails in front of the column check the position of spindle box and ensure the steadiness of the spindle's vertical movements. The column is equipped with preload precision double nut ball screws and servo motor drives the vertical travels of the spindle box.

#### Control unit

The operation booth is built with the spindle box, the control unit in the booth fore easy operation . Rota table control panel and the handset unit that allows long distance operation makes the operation simple and efficient.



**Henan Baishun Machinery Equipment Co., Ltd.**



+8618939515188



sale@goodlathe.com



lathemach.com

No.65, Tianming Road, Jinshui District, Zhengzhou City, Henan Province, China