



Ck5225 Cnc Metal Lathe Turning Vevor Mesin Bubut Machine Price Cnc Machines Machining Speed

Our Product Introduction

for more products please visit us on lathemach.com

Basic Information

- Place of Origin: Henan, China
- Brand Name: BAISHUN MACHINERY
- Certification: CE ISO
- Model Number: CK5225
- Minimum Order Quantity: 1
- Price: \$66,000.00/sets 1-4 sets
- Packaging Details:
 1. Outside we will pack the product with plastic to prevent wet.
 2. Outside of the cnc vertical lathe machine will be packed by strong wooden pallet.
- Delivery Time: 45 Working days
- Supply Ability: 20 Set/Sets per Month

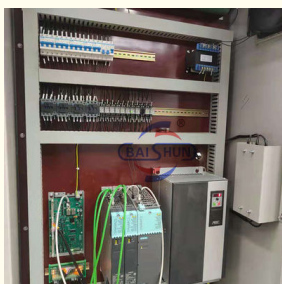


Product Specification

- Max. Length Of Workpiece (mm): 2500
- No. Of Spindles: Double
- Machining Capacity: Heavy Duty
- Control: CNC/Manual
- Max. Weight Of Work piece: 20TON
- Spindle Motor Power(kW): 55
- Worktable Diameter: 2250
- Rapid Traverse Of Rail Head: 4000 Mm/min
- Positioning Accuracy (mm): ± 0.005
- Repeatability (X/Y/Z) (mm): ± 0.003
- Highlight: Cnc Metal Lathe Turning Machine, High Precision Cnc Metal Lathe Turning, Cnc Metal Lathe Turning



More Images







BAISHUN

VERTICAL LATHE CK5250

High efficiency | Automatic | Reliable | High precision



Whatsapp: +86 18003851898 (Ms. Dora)



High Quality /PRODUCT

Factory Diresct /SELLING

Whatsapp: +86 18003851898
Email: dora@bsmachinery.com

Ck5225 Cnc Metal Lathe Turning Vevor Mesin Bubut Machine Price Cnc Machines Machining Speed

The double column vertical lathe is a cutting-edge piece of equipment that combines mechanical, electrical, and hydraulic components. It incorporates modern design principles and manufacturing techniques, leveraging CAD optimization and state-of-the-art components from both domestic and international sources.


CNC Vertical lathe is a kind of large mechanical equipment, which is used to process large and heavy work pieces with large radial size and relatively small axial size and complex shape. Such as a cylindrical surface, an end surface, a conical surface, a cylindrical hole, a conical hole and the like of various discs, wheels and sleeve work pieces, and can also be processed by means of additional devices such as running threads, spherical surface turning, imitating machining, grinding and the like; compared with a horizontal lathe, the work pieces are clamped in the clamping decoration of the horizontal lathe, while the main shaft axis of a vertical lathe is in a vertical layout, and the table surface of a worktable is in a horizontal plane; Therefore, the clamping and alignment of the work piece are more convenient. This arrangement reduces the load on the spindle and bearings, so the vertical lathe can maintain its working accuracy for a long time.

Machine parameter

Specifications	Unit	CK5225	CK5231	CK5240Q	CK5240
Max.turning diameter	mm	2500	3150	4000	4000

Max. height of work piece	mm	1600/2000/2500	1600/2000/2500	1600/2000/2500	1600/2000/2500
Max. weight of work piece	T	10/20	10/20	10/20	32
Worktable diameter	mm	2250	2830	2830/3150	3200/3600
Range of table speeds	r/min	2-63	2-63	2-63	2-63
Steps		16	16	16	16
Max torque of work table	KN.m	63	63	63	100
Rapid traverse of rail head	mm/min	4000	4000	4000	4000
Ram vertical travel of right railhead	Kn	35	35	35	40
Ram vertical travel of left railhead	kn	30	30	30	30
Range cutting force of right railhead	mm/min	1-50	1-50	1-50	1-50
Range cutting force of right railhead	mm/min	0.1-1000	0.1-1000	0.1-1000	0.1-1000
Travel of arm	mm	1000	1000	1000	1250
Section of arm	mm	255×200	255×200	255×200	240×240
Swivel of left and right railhead	°	±30°	±30°	±30°	±30°
Section of tool	mm	40×50	40×50	40×50	50×50
Power of main motor	Kw	55	55	55	75
Overall dimensions	cm	569×470×480/520	605×440×493/533	690×510×480/520	690×510×480/520

Product photos




Product Details Display


01

COMFORT VENTILATION

WORKTABLE

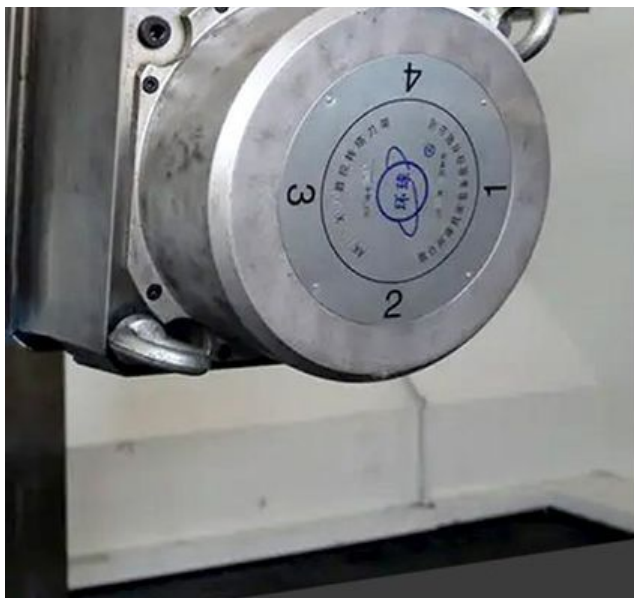
Worktable has high rotation precision and large load capacity.





02

COMFORT VENTILATION



ELECTRIC TOOL POST

Clients can choose
4,5,6 station
electric tool post.

03

COMFORT
VENTILATION

COLUMN/ CROSS BEAM

High frequency column
and beamguide,
hardness HRC-55
degree.



04

COMFORT
VENTILATION

CONTROL SYSTEM

Standard with
GSK980TDi control
Optional: Siemens,
Fanuc, Syntec ect.





Henan Baishun Machinery Equipment Co., Ltd.



+8618939515188



sale@goodlathe.com



lathemach.com

No.65, Tianming Road, Jinshui District, Zhengzhou City, Henan Province, China