



High Efficient 380V 50Hz Voltage Turning Machine With 1000Mm Max. Machining Height

Our Product Introduction

Basic Information

- Place of Origin: China
- Brand Name: BAISHUN
- Certification: ISO
- Model Number: C5112
- Minimum Order Quantity: 1 Set
- Price: Negotiation
- Packaging Details: Export standard wooden case package
- Delivery Time: 35 working days
- Payment Terms: T/T, L/C, Western Union
- Supply Ability: 50 Sets per Month

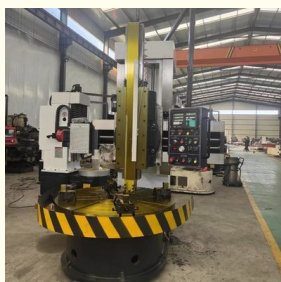


Product Specification

- Name: High Efficient 380V 50Hz Voltage Turning Machine With 1000Mm Max. Machining Height
- Machining Capacity: Medium Duty
- Max. Turned Length (mm): 1200 Mm
- Weight (KG): 1000mm
- Max.load Capacity: 1.5tons
- Type: Vertical Type
- Automatic: Manual Type
- Spindle Motor Power(kW): 15kw
- Voltage: 380V
- Warranty: 1 Year
- Highlight: 1000Mm Voltage Turning Machine,
50Hz Voltage Turning Machine,
High Efficient Voltage Turning Machine



More Images



for more products please visit us on lathemach.com

Product Description

380V 50Hz Voltage C5112-2 Turning Machine With 1000Mm Maximum Height Of Workpiece High Efficient Professional

Description:

The Manual type vertical lathe, also known as a vertical turning center, is a machine tool used for turning and cutting metal components with high precision and efficiency.

High quality castings and domestic dafang matching castings (HT300), artificial heat aging treatment. Castings do not do weight reduction treatment, the machine weight and standard weight.

Standard equipped with 2-axis digital display.

The beam guide and ram guide are treated by super audio quenching (HRC≥50), and the sliding surface of guide is treated with plastic (including inclined iron surface and pressing plate surface), so that the product precision can be maintained for a long time and the overhaul cycle can be extended for more than 10 years at least.

The electric adopts Japan omron PLC control, the electrical parts adopt high quality components, standard (CE standard) wiring process, the whole electric machine has high reliability.

Overall, The Manual type vertical lathes are a versatile and efficient machining tool that offer high precision and automation capabilities, making them an essential component of modern manufacturing processes.

Specification:

Model	C518	C5112	C5116	C5120	C5125
Max.turning dia.(mm)	800	1200	1600	2000	2500
Max.cutting height(mm)	800	1000	1000	1250	1250
Max.loading weight(tons)	1.2	3.2	5	8	10
Worktable diameter(mm)	720	1000	1400	1800	2250
Worktable speed range(r/min)	30-260	6.3-200	5-160	3.2-100	2-63
Max worktable torque(n.m)	1000	25000	32000	32000	35000
vertical travel of vertical tool post(mm)	650	650	800	800	1200
horizontal travel of vertical post(mm)	570	700	915	1200	1400
G.W(tons)	7	8	12.4	17	23
Dimension(L*W*Hmm)	2080*2621*3515	2360*2280*2800	2830*2670*3010	3200*2800*3250	3300*4000*3500

Machine picture:









Company profile:

□

Packing&delivery

□

Our Services

We can provides 7x24-hour online pre-sale service, engineer follow-up order service, and logistics delivery operation service, And also we can provide installation services. In addition, with more than 10 years experience of various markets, we can help customers successfully complete a series of services from purchasing to goods Customs clearance, thereby saving times and also reducing customers' costs in all aspects.

Warranty period:

During warranty period (one year), if you have any parts broken because of qulity problem,we will supply to you free of charge by express.

Out of warranty period, if you have any question, you can contact us, we will supply our best service to you as usual.

1. Technical support online service provided .
2. Technical files service provided.
3. Machine operation video provided
4. On-site training service provided.
5. Spare parts replacement and repair service provided.
6. All of the questions will be replied within 24 hours

We are a direct-sale lathe machine manufacturer, not a trading company, which means we can offer you the best prices.

Welcome get in touch with us:)

Tel/Whatsapp:+86 18003851898(Dora Zhao)



Henan Baishun Machinery Equipment Co., Ltd.



+8618939515188



sale@goodlathe.com



lathemach.com

No.65, Tianming Road, Jinshui District, Zhengzhou City, Henan Province, China