



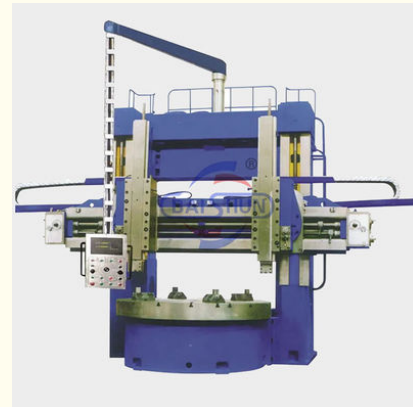
## Cnc Double Columns Vertical Turret Lathe Max Load Capacity Good Quality

Our Product Introduction

for more products please visit us on [lathemach.com](http://lathemach.com)

### Basic Information

- Place of Origin: Henan, China
- Brand Name: BAISHUN MACHINERY
- Certification: CE ISO
- Model Number: CK5225
- Minimum Order Quantity: 1
- Price: \$66,000.00/sets 1-4 sets
- Packaging Details:
  1. Outside we will pack the product with plastic to prevent wet.
  2. Outside of the cnc vertical lathe machine will be packed by strong wooden pallet.
- Delivery Time: 45 Working days
- Supply Ability: 20 Set/Sets per Month

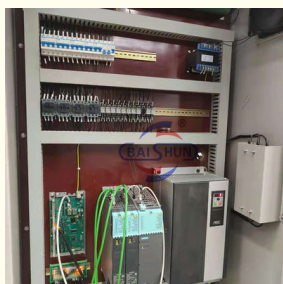


### Product Specification

- Max. Length Of Workpiece (mm): 2500
- No. Of Spindles: Double
- Machining Capacity: Heavy Duty
- Control: CNC/Manual
- Max. Weight Of Work piece: 20TON
- Spindle Motor Power(kW): 55
- Worktable Diameter: 2250
- Rapid Traverse Of Rail Head: 4000 Mm/min
- Positioning Accuracy (mm):  $\pm 0.005$
- Repeatability (X/Y/Z) (mm):  $\pm 0.003$
- Highlight: Cnc Double Columns Vertical Turret Lathe, CNC Manual Control Vertical Turret Lathe



### More Images



# VERTICAL TURNING LATHE

## CK5225



Whatsapp:+86 18003851898 (Ms.Dora)



High precision



High speed



High efficiency



Reliable

### Best Cnc Double Columns Vertical Turret Lathe Max Load Capacity New Design Good Quality

This machine is ideal for high-speed steel and alloy cutting tools, as well as hardware for ferrous metals, nonferrous metals, and some non-metallic parts. It handles internal and external cylindrical surfaces, end faces, grooving, and rough finish machining.


The beam is positioned in front of the column, allowing vertical movement along the column guide rail. A lifting box on the upper part of the column, driven by an AC motor, uses a worm pair and lead screw to move the beam up and down. All large components are made of high-strength, low-stress cast iron HT250, which undergoes aging treatment to eliminate stress and ensure machine tool accuracy.

### Machine parameter

Specifications	Unit	CK5225	CK5231	CK5240Q	CK5240
Max.turning diameter	mm	2500	3150	4000	4000
Max. height of work piece	mm	1600/2000/2500	1600/2000/2500	1600/2000/2500	1600/2000/2500
Max. weight of work piece	T	10/20	10/20	10/20	32
Worktable diameter	mm	2250	2830	2830/3150	3200/3600
Range of table speeds	r/min	2-63	2-63	2-63	2-63
Steps		16	16	16	16

Max torque of work table	KN.m	63	63	63	100
Rapid traverse of rail head	mm/min	4000	4000	4000	4000
Ram vertical travel of right railhead	Kn	35	35	35	40
Ram vertical travel of left railhead	kn	30	30	30	30
Range cutting force of right railhead	mm/min	1-50	1-50	1-50	1-50
Range cutting force of right railhead	mm/min	0.1-1000	0.1-1000	0.1-1000	0.1-1000
Travel of arm	mm	1000	1000	1000	1250
Section of arm	mm	255×200	255×200	255×200	240×240
Swivel of left and right railhead	°	±30°	±30°	±30°	±30°
Section of tool	mm	40×50	40×50	40×50	50×50
Power of main motor	Kw	55	55	55	75
Overall dimensions	cm	569×470×480/520	605×440×493/533	690×510×480/520	690×510×480/520

## Product photos




# Product Details Display


01

COMFORT VENTILATION

## WORKTABLE

Worktable has high rotation precision and large load capacity.





02

COMFORT VENTILATION

## ELECTRIC TOOL POST





POST  
Clients can choose  
4,5,6 station  
electric tool post.

03

COMFORT  
VENTILATION

## COLUMN/ CROSS BEAM

High frequency column  
and beamguide,  
hardness HRC-55  
degree.



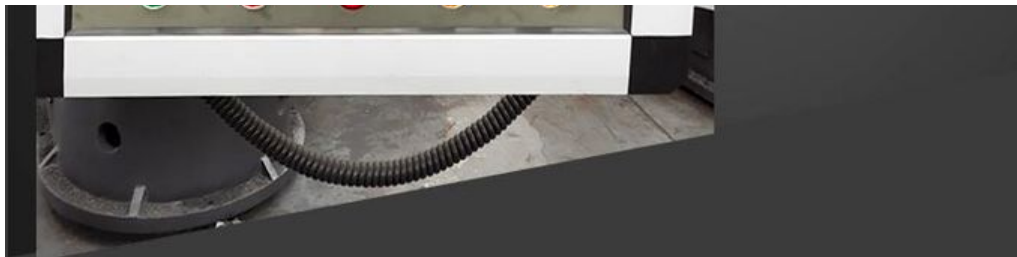
04

COMFORT  
VENTILATION

## CONTROL SYSTEM

Standard with  
GSK980TDi control  
Optional:Siemens,  
Fanuc,Syntec ect.



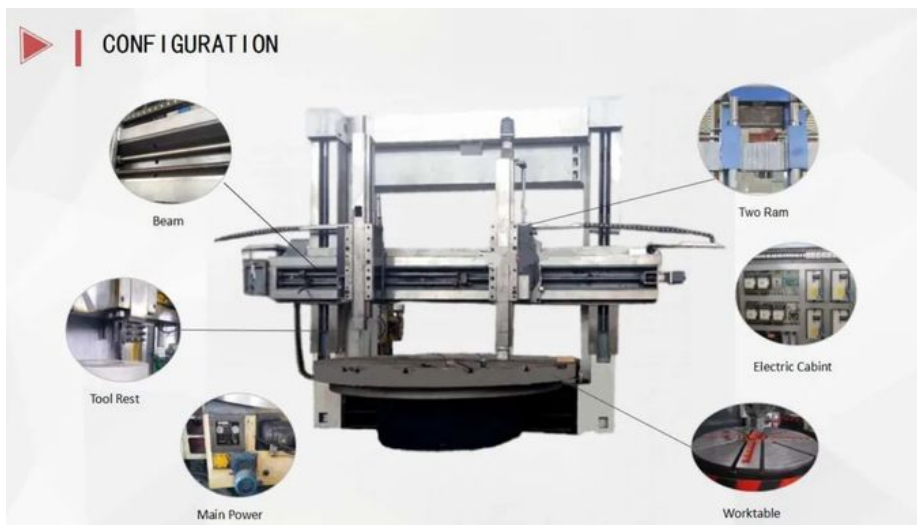


### **ELECTRIC SYSTEM**

All machine control components such as contractors are installed in the power distribution cabinet. All the operating components are centrally mounted on the hanging button station. Machine electrical system and mechanical action set many chains, to ensure the machine control and mechanical movement of the reliability, safety, in the event of failure, just press the emergency button, the whole equipment power.

### **HYDRAULIC STATION**

table static pressure system, the main transmission system, cross-beam clamping system, vertical turret ram hydraulic balance system. Static pressure system table by the oil pump, the static pressure oil is allocated to each oil pool, table height by adjusting the reach of 0.06-0.15mm. Hydraulic device pressure protection, such as the use of pressure will automatically shut down.



### **Contact**

**We are a direct-sale lathe machine manufacturer, not a trading company, which means we can offer you the best prices.**

**Welcome get in touch with us:  
Tel: +86 18003851898**



**Henan Baishun Machinery Equipment Co., Ltd.**



+8618939515188



sale@goodlathe.com



lathemach.com

No.65, Tianming Road, Jinshui District, Zhengzhou City, Henan Province, China