



CW61220 Customizable Large Shaft Turning Horizontal Metal Lathe Machine Universal

Our Product Introduction

for more products please visit us on lathemach.com

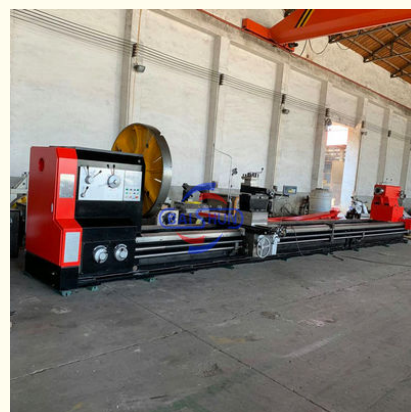
Basic Information

- Place of Origin: China
- Brand Name: BAISHUN
- Certification: ISO
- Model Number: CW61220
- Minimum Order Quantity: 1 Set
- Price: USD 11000-19000/Set
- Packaging Details: Export standard wooden case package
- Delivery Time: 45 working days
- Payment Terms: T/T, L/C, Western Union
- Supply Ability: 50 Set per Month



Product Specification

- Product Name: Horizontal Metal Lathe Machine Universal
- Type: CW61220
- Max.load Capacity: 16ton
- Style: Horizontal
- Max.swing Over Bed: 2200mm
- Max.swing Over Carriage: 1800mm
- Spindle Bore: 130mm
- Application: Metal Turning
- Key Words: Heavy Duty Lathe
- Power: 22KW
- Highlight: Large Shaft Horizontal Metal Lathe Machine, Universal Horizontal Metal Lathe Machine, Customizable Horizontal Metal Lathe Machine



More Images



Product Description

CW61220 Customizable Large Shaft Turning Horizontal Metal Lathe Machine Universal

Product Introduction:

The CW6163, CW61100, CW61125, and CW61160 heavy-duty lathes are suitable for turning or machining cast iron and steel workpieces as well as medium to large non-ferrous metal parts. They can perform external cylindrical surface turning, internal hole and end face turning, and various internal and external metric, inch, module, and diametrical pitch threads. The top slide can be used independently for turning of short tapers. These lathes boast high power, high rigidity, and a wide range of rotating speeds, making them ideal for high-speed and strong force turning operations.

This lathe are suitable for turning internal and external cylindrical, conical and swing surfaces as well as various metric, inch, module and diametric pitch threads. They can also be used for broaching oil grooves and keyways.

The Horizontal lathe machine is mainly suitable for cutting the workpiece inside and outside round cylindrical, cone and other rotating parts, machinable various commonly used metric, inch, module and diametral pitch thread, and broaching oil groove and keyway.

CW61200 / CW61250 Series Lathe Machine (16/32 tons load capacity):

Swing over bed: 2000mm;

Swing over cross slide: 1600mm;

Processing length: it's up to customer's requirements;

Bed width: 1100mm;

Load capacity: 16 tons;

Spindle bore: 130mm;

Main motor power: 22kw.



HORIZONTAL LATHE MACHINE

DETAILS DETERMINE SUCCESS OR FAILURE. DETAILS CAST A GOOD MACHINE





Specification:

Technical items	CW6163	CW6180Q	CW6180B	CW61110Q / CW62110Q	CW61125Q	CW61125B	CW61160B	CW61160	CW61200	CW61250
Model	CW6263	CW6280Q	CW6280B		CW62125Q					

Swing diameter over bed	630mm	800mm	800mm	1100mm	1250mm	1250mm	1600mm	1600mm	2000mm	2500mm
Swing diameter over carriage/cross slide	350mm	480mm	480mm	800mm	920mm	860mm	1200mm	1200mm	1600mm	2100mm
Swing diameter over gap/saddle	CW6163-No gap	CW6180Q-No gap	CW6180B-No gap	CW61110Q-No gap	CW61125Q-No gap	No gap				
	CW6263-800mm	CW6280Q-1000mm	CW6280B-1000mm	CW62110Q-1300mm	CW62125Q-1500mm					
Max. Length of workpiece	1500mm; 2000mm; 3000mm;4000mm; 5000mm; 6000mm; 8000mm; 10000mm; 12000mm; 14000mm; 16000mm; 18000mm; 20000mm									
Max.weight of workpiece	2 tons	2 tons	2.5 tons	2.5 tons	2.5 tons	6 tons	6 tons	16 tons	16 tons	16 tons
Spindle hole diameter	105mm	105mm	105mm	105mm	105mm	130mm	130mm	130mm	130mm	130mm
Guide rail width	550mm	550mm	600mm	600mm	600mm	755mm	755mm	1100mm	1100mm	1100mm
Main motor power	11 kw	11 kw	11 kw	11 kw	11 kw	22 kw	22 kw	22 kw	22 kw	22 kw

Company Profile:

Henan Baishun Machinery Equipment Co., Ltd. is a professional manufacturer of machinery equipments with a long history. We can manufacture manual kind of horizontal lathe machine; CNC lathe machine; vertical lathe machine; roll lathe machine; facing lathe machine; deep hole drilling and boring machine, Plano miller, etc. Recent years we have new products, named Pole erection machine with post hole digger, which is very suitable in digging earth & erection of Electrical Poles. This compact solution can be quite useful for Pole erection as it helps in reduction of labour and increases the number of poles erected per day thereby significantly reducing the project time drastically. More safeties are provided in this machine compare to other local pole erector machines.

REAL SHOOTING

PRODUCTION WORKSHOP

CAREFUL AND RIGOROUS, PRECISE ASSEMBLY, EVERY PLACE IS DELICATE
TEEVERY SILK IS OUR DEDICATED EFFORT.

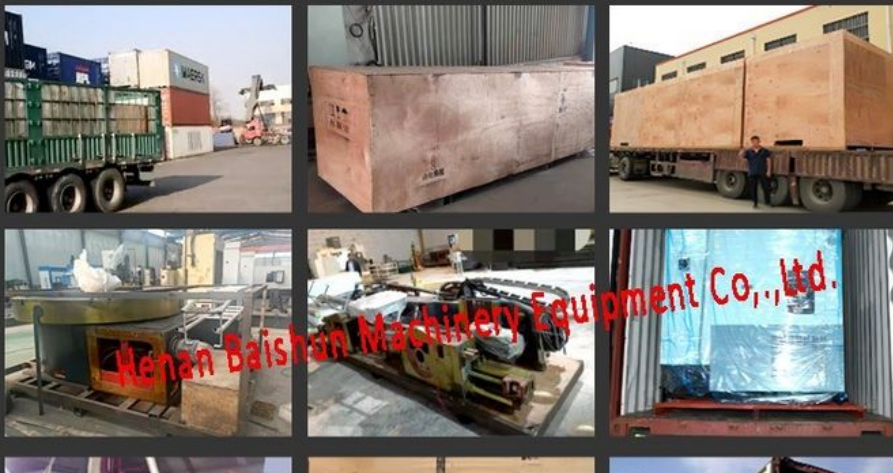


Packing&Delivery:



DELIVERING

Packing and transportation before export





WHY CHOOSE US?



Advanced facilities



Reliable quality control



Logistics support



Professional engineers



Our services& advantage:

Our Services

We can provides 7x24-hour online pre-sale service, engineer follow-up order service, and logistics delivery operation service, And also we can provide installation services. In addition, with more than 15 years experience of various markets, we can help customers successfully complete a

series of services from purchasing to goods Customs clearance, thereby saving times and also reducing customers' costs in all aspects.

Our advantage:

- 1: With CE, ISO certification.
- 2: Full production tracking.
- 3: Professional engineers can guarantee the highest quality.
- 4: More suppliers as alternatives, guarantee your lowest and competitive price.
- 5: Sales staff with more than 10 years experience, will answer your pre-sales and after-sales questions.
- 6: OEM production is available, to meet customer needs
- 7: Low MOQ (1 unit) is available.
- 8: 24 hours technical support.

Warranty period:

During warranty period (one year), if you have any parts broken because of quality problem, we will supply to you free of charge by express.

Out of warranty period, if you have any question, you can contact us, we will supply our best service to you as usual.

1. Technical support online service provided .
2. Technical files service provided.
3. Machine operation video provided
4. On-site training service provided.
5. Spare parts replacement and repair service provided.
6. All of the questions will be replied within 24 hours



河南百顺机械设备有限公司
Henan Baishun Machinery Equipment Co., Ltd.
Office Address: No. 65, Tianming Road, Jinshui District, Zhengzhou City, Henan Province, China

Ms. Elena Xie
(Sales Manager)

Ph:/Whatsapp: +86 17838375098

Email: elena@goodlathe.com

Tel: +86 371-55661885



Henan Baishun Machinery Equipment Co., Ltd.

+8618939515188

sale@goodlathe.com

lathemach.com

No.65, Tianming Road, Jinshui District, Zhengzhou City, Henan Province, China